








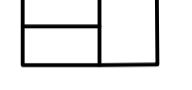




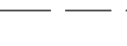


Skala 1:100

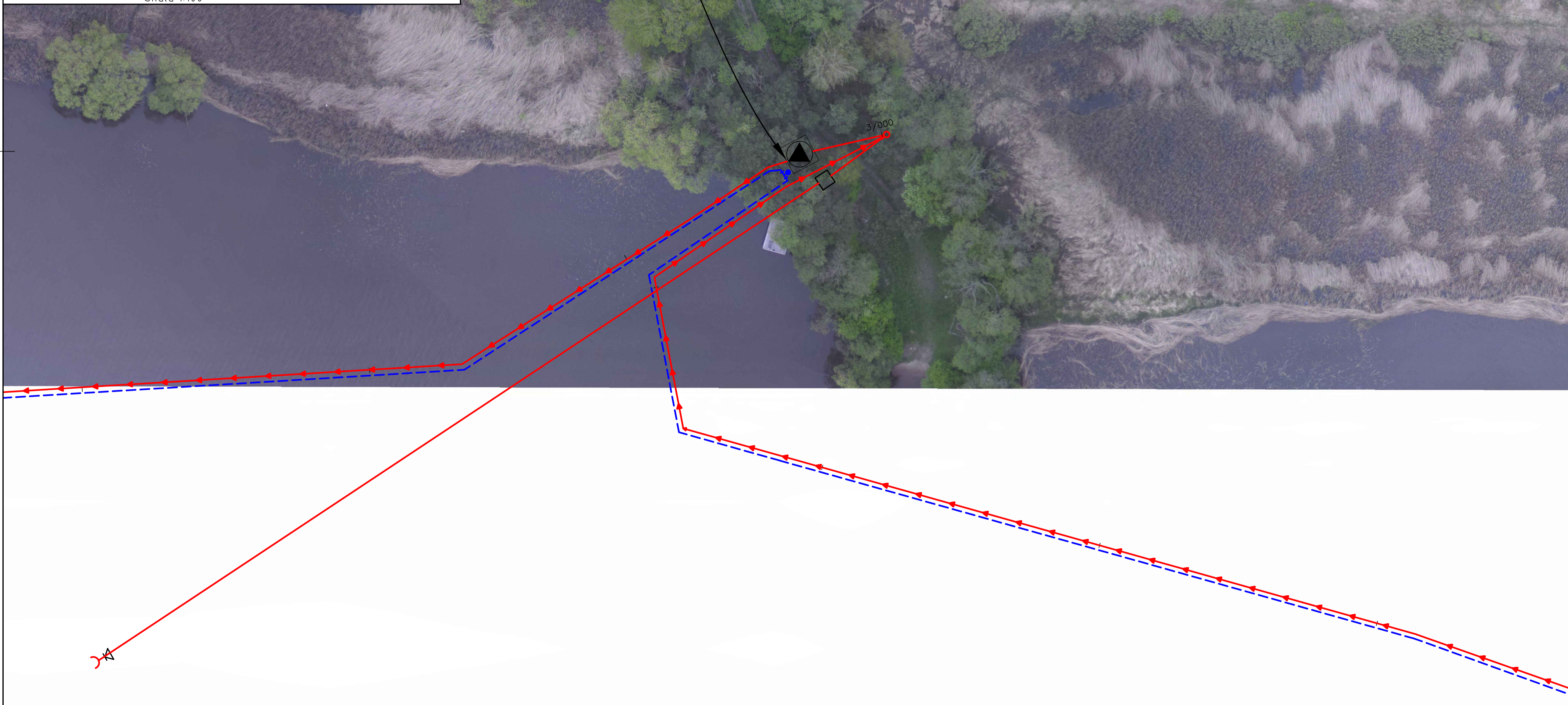


NYTT

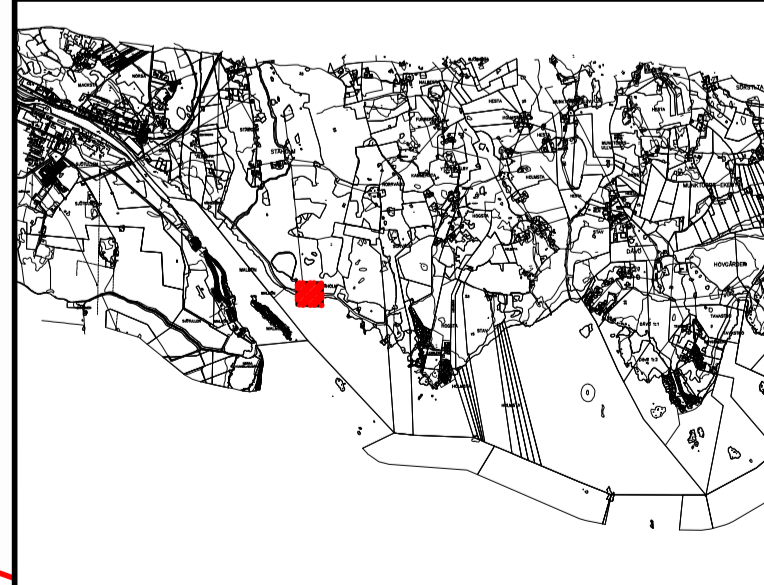
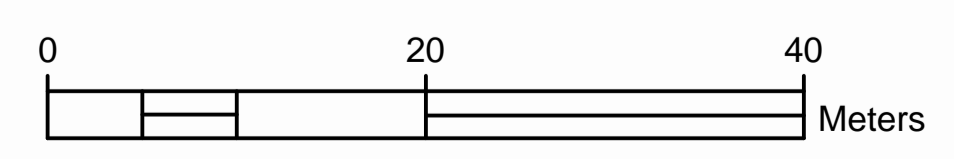
-  TRYCKSPILLEDNING
-  VATTENLEDNING
-  SPILLVATTENLEDNING
-  NÖDBRÄDDNING  $\phi 160$  PP
-  DIKE
-  BACKVENTIL
-  NEDSTIGNINGSBRUNN
-  PUMPSTATION
-  UPPSAMLINGSTANK
-  TRYCKSTEGRINGSSTATION

BEF

-  FASTIGHETSGRÄNS
-  STAKET
-  STRANDLINJE



3/000



Bräddavlopp  
Ståholm  
FASTIGHETSÄGARE

SKALA A1 1:250 PUMPSTATION Pumpstation 4

V:\proje\310531\054\08\_Norra\_Mjörby\redovisning\pumpstation\pumpstation\_4\01.dwg 2017-05-03 11:41